

Ark Associates Limited

ARK



Ark Associates Limited

Address: Room 1303-4, 13/F, Block A, Sea View Estate, 2 Watson Road,
North Point, Hong Kong

Contact Person: William Liu

Tel: (852) 21366228

Email: mail@ark.com.hk

Website: <http://ark.com.hk/>

Social Media: LinkedIn: <https://www.linkedin.com/company/ark-associates-limited-hongkong>
Other: <https://www.instagram.com/hk.ark/>

Company Profile

ARK Associates is an award winning office established by William Liu in 2002 to provide innovative architecture and interior design services to clients who desire to differentiate their projects from homogeneous solutions in the market while at the same time meeting the project's practical and market needs. In the practice of design for the 21st century, we believe that design should be experience and lifestyle oriented and able to evoke the senses and emotion. In providing architecture as well as interior design services, ARK aims to provide an integrated design experience to a project to enhance branding and customer experience, marketing quality and enhance value. With our experiences as lead consultant and expertise in design management, we are able to provide comprehensive architecture and interior services to projects of all scales and complexities.

ARK has developed into an award-winning office of over 40 people with professional architects and interior designers that provides full architectural consultancy, design and façade architectural consultancy to interior design. The office is directed by William Liu, Lavinia Lau and Jimmy Luk. With over 25 years of experiences in the field of design and architecture they lead together with a number of experienced associates, architect and designers. The office has completed a prolific body of creative works from residential, commercial, hospitality to large mix used projects that has been recognized both internationally and locally. In 2010 ARK obtained the ISO 9001 accreditation for our Quality Management systems.

Services

Architectural Services

The ADDITION Hong Kong

Project Category
Residential

Client
Henderson Land Development Company Limited

Scope of Work
Others

Completion Year
2021

Contact

William Liu

Tel:
(852) 21366228

Email:
mail@ark.com.hk

Situated on Un Chau Street, the ADDITION settled in a well-networked society that is undergoing urban gentrification and attracted young families and individuals to settle, transforming the city into a major hub of art development and start-ups.

The residential lobby is designed with the concept of 'Classic with a Twist', the beauty of Eclectic Aesthetic is expressed to the fullest. It is worth noting that the kitchen and bathroom in every units of apartment maximize the beauty of contemporary lifestyle with a slight touch of tradition. It reflects the pursuit of efficiency and practicality of residents by making good use of every inch of space.

The classical navy walls of CLUB ADDITION accompanied by edgy modern lights and colorful furniture created a unique and fancy atmosphere of entertainment for youngsters. This also highlights the British-styled elegance demonstrated by a balanced mix of earthy tonal qualities and whimsical display of colours.



CLUB Ontolo

Hong Kong

Project Category
Residential

Client
Great Eagle Holdings Limited

Scope of Work
Others

Completion Year
2020

Contact

William Liu

Tel:
(852) 21366228

Email:
mail@ark.com.hk

With large greens space in the center, Ontolo gives rise to the concept of "Living in a Park" and takes advantage of prime waterfront location with spectacular views to Tolo Harbour. Alison Pickett, the art consultant, worked closely with ARK to curate unique art pieces that articulates the theme so that art and culture became part of overall lifestyle experience.

The Clubhouse was designed for every age and user group. Playspace transformed into treehouses that is formed by rope course and net footbridges as a balance of adventure and safety. It departs from common colorful typology and emphasize the connection between human and nature.

Functions of clubhouse are often linked by long corridors, but Ontolo offers circulations with unique experiences. Some walls undulate sculpturally to create frozen movements, some breakout into gallery spaces, open co-work spaces, individual workspaces or intimate lounge spaces. There is never a boring moment.



Novum Point Hong Kong

Project Category
Residential

Client
Henderson Land Development Company Limited

Scope of Work
Others

Completion Year
2020

Contact

William Liu

Tel:
(852) 21366228

Email:
mail@ark.com.hk

In hope to treasure the Aesthetics and Art of Leisure Life, Novum Point is an Art Apartment themed residential tower located in North Point at the harbor rim.

The wooden texture of lobby walls match with the sculptural lightings to create the classical aura. Being portrait as a grand entrance of aristocratic, the lift lobby is decorated by artworks of local young artists as an artistry enrichment to daily lives.

The Point is the recreational area dedicated for users of all age groups; it consists of a comfy dining areas allowing friends and families to gather, fitness zone with invigorating gym facilities and a cozy reading lounge equipped with carefully selected literature works. The tower also has a rooftop garden that engulf users with pacifying natural ambient.



Iceberg, 68 Kimberley Road Hong Kong

Project Category

Others

Client

Henderson Land Development Company Limited

Scope of Work

Others

Completion Year

2019

Contact

William Liu

Tel:

(852) 21366228

Email:

mail@ark.com.hk

The Iceberg is a "Ginza" type vertical retail tower situated in the commercial district of Tsim Sha Tsui. The design seeks to create an iconic tower as the new shopping and dining landmark destination. The unique setback and form making of the building created an extra façade plus a new urban pathway to enhance the pedestrian network to the retail shops behind the site and the area beyond. At the ground level, the entrance is conceived as a "Cave" without doors to easily bring people to the main lobby above via open escalators. In the daytime, the matt white ceramic ink patterns combined with the reflection of the vision glass create a dynamic multidimensional effect. At night, horizontal led lights in the changing colour of Auroras reflects off the printed glass create an urban spectacle.

Awards

2021 | World Architecture Festival Finalist 2021 | Architecture MasterPrize Honorable Mention
2020 | A&D Awards Silver Award 2019 | Asia Pacific Property Award Five Stars Award



Hotel 1936

Hong Kong

Project Category

Hospitality, Resort & Entertainment

Client

Tai Hung Fai Enterprise Company Limited

Scope of Work

Others

Completion Year

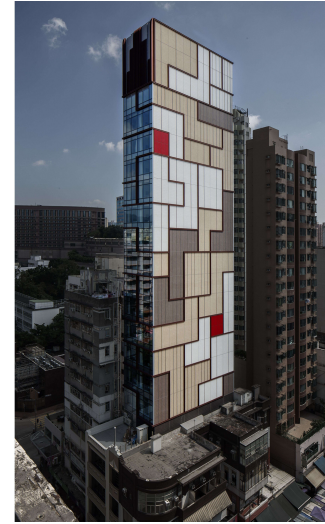
2020

Contact

William Liu

Tel:
(852) 21366228

Email:
mail@ark.com.hk



The project involves building a boutique hotel on top of an existing heritage building. The concept seeks cues, lines and patterns from traditional Chinese furniture as well as Art Deco from the 1920s, which is the age of the heritage building.

The site of Hotel 1936 was originally occupied by a 1930's traditional "TongLau" building. Tong Laus are often torn down to make way for new developments with larger gross floor area. Determined to contribute to Hong Kong's cultural heritage, this project tries to preserve as much of the existing building as possible.

To increase the floor area, a boutique hotel tower is built on top of the existing site while the existing building frontage, verandas and part of the floors would be kept - structurally and spatially stitched with the new building. The existing façade thus becomes a mini podium which acts as the hotel entrance while maintaining a humane, traditional architectural scale in relations to the Mong Kok urban fabric.

Awards

2020 | Asia Pacific Property Award Five Stars Award 2020 | A&D Awards Finalist



Ocean Terminal Extension, Harbour City Hong Kong

Project Category

Others

Client

The Wharf (Holdings) Limited

Scope of Work

Others

Completion Year

2018

Contact

William Liu

Tel:
(852) 21366228

Email:
mail@ark.com.hk

The Ocean Terminal Extension is a signature retail mall situated at the tip of Ocean Terminal Shopping mall at Harbour City. Jutting out into Victoria Harbour, the mall provides premium retail and F&B spaces with spectacular sea views. ARK was appointed as the interior designer to the project to work in collaboration with Foster + Partners as the design architects.

As a new extension building, it operates as a cruise terminal. Hence, the lower floor is a fully operational terminus with immigration and customs facilities etc. whilst the top floors provide shopping and F&B space.

The interior design takes inspiration from forms, finishes and colour of ships and ocean liners. Choice of materials are kept slick and stream line. White colour is extensively used to maintain airy feel of the space while dark grey glass, stainless steel and flooring is introduced to give a contrasting punch.

Awards

2018 | USA Interior Design Best of Year Award 2018 | A&D Trophy Award Certificate of Excellence



V Point

Hong Kong

Project Category

Others

Client

Sa Sa International Holdings Limited

Scope of Work

Others

Completion Year

2017

Contact

William Liu

Tel:
(852) 21366228

Email:
mail@ark.com.hk

VPOINT is a new "Ginza" type retail high-rise tower in the heart of Causeway Bay; a major trendy retail district in Hong Kong. The 30-storey tower, designed as signature landmark tower within the urban fabric, takes inspiration from the shapes of crystals and gemstones.

While most towers in Hong Kong are detached from the podium, the design of VPOINT seeks to have a more continuous, seamless and honest architectural expression. Thus the curtain wall is designed to continue from the tower to touch the ground level, then conceptually cut away to allow a contrasting transparent retail podium box to be inserted in.

The façade lighting was designed to enhance the reading of the architectural form at night. LED lights lit up the diamond shapes of the building, which could be seen from the urban landscape. The entrance lighting level was increased to wash the feature and define the entrance experience.

Awards

2017 | HKIA Merit Award 2017 | Asia Pacific Property Award Five Stars Award 2017 | A&D Trophy Award Certificate of Excellence 2017 | HKIA Cross Strait Award Nominated Award 2017 | World Architecture Festival Finalist 2018 | iF Design Award



Maxim's Centre Hong Kong

Project Category

Office, Mixed-use & Commercial

Client

Maxim's Group

Scope of Work

Others

Completion Year

2015

Contact

William Liu

Tel:

(852) 21366228

Email:

mail@ark.com.hk

The project goal is to design a new headquarter for Maxim to house their various programmes including office space, executive floor, training centers, conferences centers, staff facilities and a public face with Maxim's own restaurant chains. The design finds a new expression to express corporate culture of Maxim; which is grounded in tradition while forward thinking at the same time.

The building form is a generic rectangular volume with rounded corners to express the continuation of surface and space. With detail manipulation of cutting and pushing, the façade is modulated to give the building a slow motion of dynamic movement. The curtain wall water droplet mullion feature is conceptualized as a continuation of folding glass surface. It allows the building to be transparent and solid when viewed from different perspectives. At night, façade lightings enhance the dynamic building form with a theatrical expression.

Awards

2016 | Asia Pacific Property Award Five Stars Award



Mount Parker Clubhouse

Hong Kong

Project Category
Residential

Client
Swire Properties

Scope of Work
Others

Completion Year
2015

Contact

William Liu

Tel:
(852) 21366228

Email:
mail@ark.com.hk

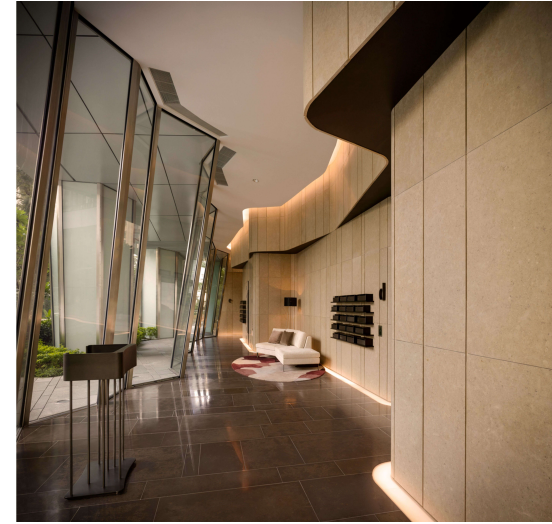
As an innovative high-end development, the design of Mount Parker break away from the mould of traditional residential tower typologies. The challenge was to develop an interior design strategy that would be harmonious with the signature architecture while at the same time be an original departure from traditional residential interiors.

The design aims to redefine luxury by adopting influences from sculpture and architectural space making to create spaces that would be a combination of art and architecture. A thematic concept of 'Flow' is developed as a generator for the space, form and surface making.

Unlike conventional clubhouses where spaces are normally planned as enclosed rooms, this clubhouse is an open plan to increase the sense of space and community. The space is surround by sculptural library walls, which the library is open and shares with lounge and gymnasium.

Awards

2016 | Asia Property Award Five Stars Award 2016 | Quality Building Award Certificate of Merit 2015 | A&D Trophy Award Certificate of Excellence 2015 | Asia Pacific Interior Design Award Best 10 2015 | USA Interior Design Best of Year Honoree





Hong Kong Trade Development Council – Head Office

38/F Office Tower, Convention Plaza,
1 Harbour Road, Wan Chai, Hong Kong
Tel: (852) 1830 668 Fax: (852) 2824 0249 Contact us: www.hktdc.com/contact-us

香港貿易發展局總辦事處

香港灣仔港灣道1號會展廣場辦公大樓38樓
電話：(852) 1830 668 傳真：(852) 2824 0249 聯絡：www.hktdc.com/contact-us

www.hktdc.com

The Hong Kong Trade Development Council (HKTDC) makes no express or implied representation or warranty regarding the information, standing or credit of any person or company and in respect of any product or service. Please take normal commercial precautions for your business interest. While every effort has been made to ensure accuracy of any of the information provided, the HKTDC is not responsible for any errors or omissions concerning any such information, and does not accept any responsibility and liability for any loss or damage whatsoever arising from any cause whatsoever in connection with any use of the information. All copyright and other rights in the information belong to the HKTDC. It is prohibited to sell, distribute, publish, reproduce or otherwise use for any purpose (including but not limited to direct marketing or mass broadcasting) any information without prior written permission from the HKTDC.