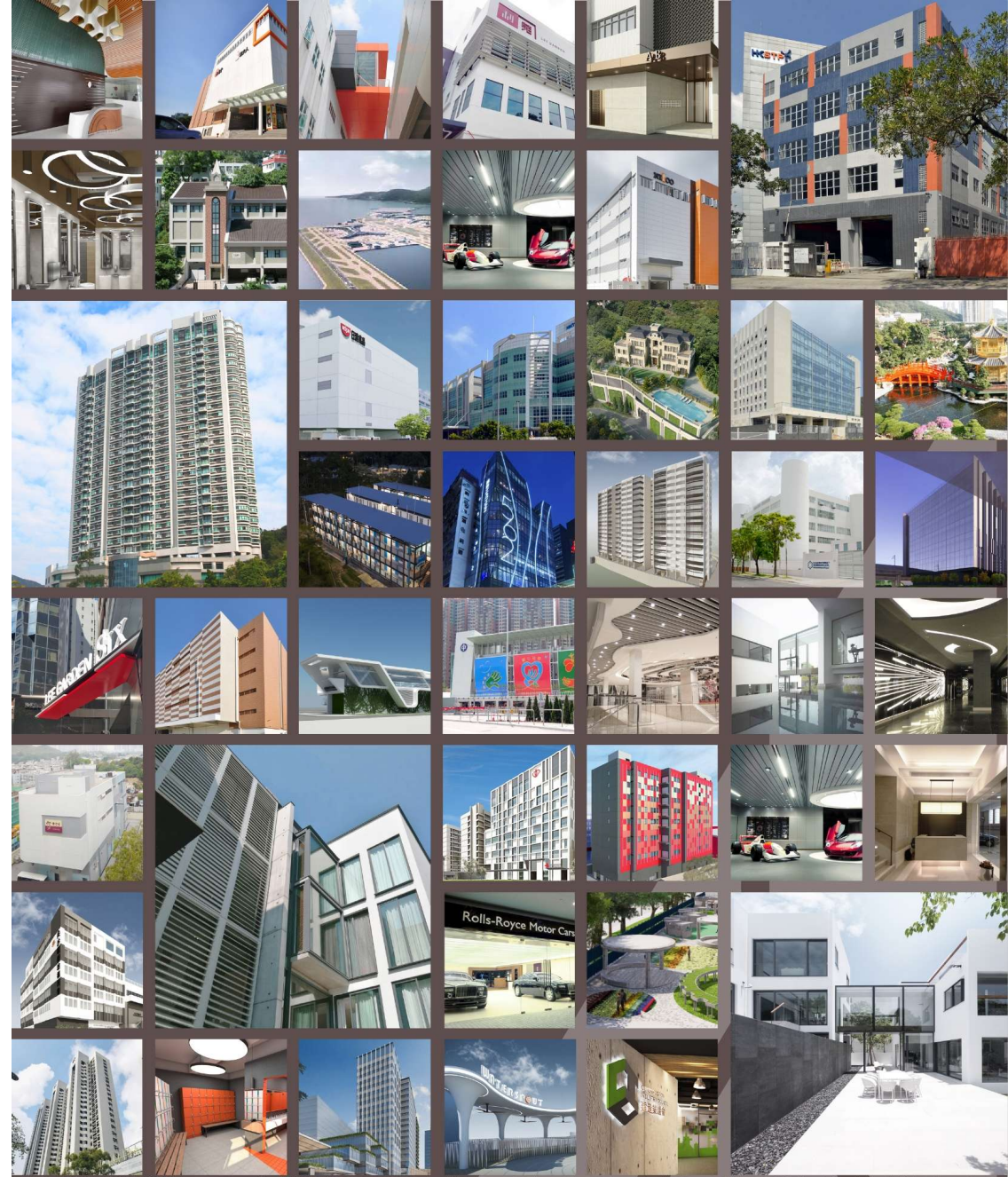


David S.K. Au & Associates Ltd.



Tel: (852) 2560 8811 Fax: (852) 2513 1828 Web: www.daal.com.hk Address: 15th Floor, 633 King's Road, North Point, Hong Kong



區兆堅建築及工程設計顧問有限公司
DAVID S.K. AU & ASSOCIATES LTD.



David S.K. Au & Associates Ltd.

Address: 15/F, 633 King's Road, North Point, Hong Kong
Contact Person: LEE Chi Hang Joseph
Tel: (852) 25608811
Email: daal@daal.com.hk
Website: www.daal.com.hk
Social Media: Facebook: David S.K. Au & Associates Ltd.

Company Profile

David S.K. Au & Associates (DAAL) has been operating as a multi-disciplinary practice and providing “one-stop-shop” building consultancy services since 1980. DAAL has continuously played a leading role in development of the HKSAR's construction industry and has remained at the forefront of planning, design and construction supervision of buildings, infrastructure, architectural and utility facilities.

We have over 250 staff and provide a wide range of services under the same roof. Our professional staff includes Authorized Persons (AP), Registered Structural Engineers (RSE), Registered Geotechnical Engineers (RGE), Registered Inspectors (RI), Registered Architects (RA), Registered Civil Engineers, Registered Building Services Engineers, Registered Building Surveyors, Registered Quantity Surveyors, Chartered Environmentalist, Beam Professionals, Registered Energy Assessors, BIM (Building Information Modeling) specialists, Interior Designers, Fire Engineers, and MIC Specialists.

Our firm is unique in that we offer a truly comprehensive consultancy service package from planning and design stage to statutory submission, and to contract administration during construction stage and quality control up till post-construction stage. With all disciplines gathered under the same roof and led by the same management team, we work to achieve a thorough understanding of the client's operational needs and requirements.

Services

Architectural Services, Landscape Architectural Services, Building & Construction Services, Engineering Services, Surveying, Others



Proposed Maxim's Food Factory Development Hong Kong

Project Category

Data Centre & Industrial Building

Client

Maxim's Group

Scope of Work

Architectural Services, Building & Construction Services,
Engineering Services

Completion Year

2021

Contact

LEE Chi Hang Joseph

Tel:
(852) 25608811

Email:
daal@daal.com.hk



This is a new food factory building comprises of a 5-storey. The ground floor is mainly warehouse, loading and unloading bay with plant rooms. 1/F to 3/F are food production area and cleanroom areas. 4/F would be the ancillary office, laboratory and in house canteen. This building would apply for beam plus rating.

The typical headroom of the building is approximately 5.3m height main served for the production area and E&M space. Due to high demand of air change to the food process, the building design is highly considered in large provision of building services. Align to the site profile, the building form is almost square in shape with highlighted façade in the main entrance.



Proposed New Temporary Leisure Farm (K-Farm) Hong Kong

Project Category
Education & Culture

Client
Rough C Limited

Scope of Work
Architectural Services, Building & Construction Services,
Engineering Services, Surveying

Completion Year
2020

Gross Area (sq m)
1930

Contact

LEE Chi Hang Joseph

Tel:
(852) 25608811

Email:
daal@daal.com.hk

K-farm is a non-profit project in Kennedy Town in the support of Harbourfront Commission and Central & Western District Council to provide the public promenade at Western District Public Cargo Working Area site (WDPCWA) a synergy effect. The development comprises of three shelters, a Greenhouse, four nos. of organic farm, an aquaponic pool and two auxiliary blocks for offices and pantry. Each buildings are designed and disposition to cater the operation of a community garden and so to enhance the vibrancy and diversify of the harbourfront. K-farm would be the first urban farm in Hong Kong incorporating hydroponics, aquaponic and organic farming systems for the general public to learn and appreciate the environment.



Retrofitting Works for Factory Hong Kong

Project Category

Data Centre & Industrial Building

Client

Hong Kong Science and Technology Parks Corporation

Scope of Work

Architectural Services, Building & Construction Services, Engineering Services, Surveying

Completion Year

2018

Gross Area (sq m)

8500

Contact

LEE Chi Hang Joseph

Tel:
(852) 25608811

Email:
daal@daal.com.hk

In order to optimize the use of land and dovetail the government's policy on "re-industrialization", Hong Kong's Science and Technology Parks Corporation (HKSTP) repossessed a site with five storey industrial building in which manufacturing operation has been ceased for a few year in Tai Po Industrial Estates. HKSTP wishes to retrofit the building into a specialized multi-storey industrial building to accommodate manufacturers in Science, Innovation & Technology based industries.



Towngas TGT Internet Application Centre Hong Kong

Project Category

Data Centre & Industrial Building

Client

Towngas Telecommunications Company Ltd.

Scope of Work

Architectural Services, Building & Construction Services,
Engineering Services

Completion Year

2016

Gross Area (sq m)

21000

Contact

LEE Chi Hang Joseph

Tel:
(852) 25608811

Email:
daal@daal.com.hk

This internet application centre is an alteration and addition works with a vertical extension of two-storey to an existing three-storey electronics factory. The lowest three floors are converted to few large cloud computer rooms. The new extension above houses the office and R&D center with balconies overlooking Lyemooon Pass.

The building design promotes a green environment and work-life balance for users and visitors. It features with green roof, courtyards, balconies, skylights, solar panel system and greenwalls.

The building facade is covered with ventilated panels in terracotta. This environmental-friendly system can improve energy efficiency of the building and keep the building envelope dry in natural chimney effects.



MINI lifestyle - Great Things Come in Small

Hong Kong

Project Category

Office, Mixed-use & Commercial

Client

BMW Concessionaires (H.K.) Ltd.

Scope of Work

Architectural Services, Building & Construction Services,
Engineering Services, Surveying

Completion Year

2010

Contact

LEE Chi Hang Joseph

Tel:

(852) 25608811

Email:

daal@daal.com.hk

In 2010, our company took part in the design, contract administration, and construction works for the Mini Showroom at Hysan Avenue, Causeway Bay. The design for the showroom strictly followed the standards of MINI's Corporate Image, and our company had to work closely with the BMW's representatives during the design stage.

The challenge was to create a trendy, spacious atmosphere within a confined space. This showroom was not merely for the display for cars, but for the display of MINI Lifestyle. With clever space planning, the 100 square meter shop successfully accommodated a coffee area, a pantry, a dressing room, and a reception area apart from the car and accessories display.



Toilets, Baby Care Room, Concierge and Playground Renovation at Lee Garden II Shopping Mall

Hong Kong

Project Category

Office, Mixed-use & Commercial

Client

Barrowgate Limited

Scope of Work

Architectural Services, Building & Construction Services, Engineering Services, Surveying

Completion Year

2020

Contact

LEE Chi Hang Joseph

Tel:
(852) 25608811

Email:
daal@daal.com.hk

The project aims to introduce a new luxurious lavatory experience and create a child-friendly environment for shoppers of Lee Gardens II with a touch of nature. Our scope involves renovation works to six male and female lavatories, baby care room, concierge, and rooftop kids area of the shopping mall. Out of all, the most successful part of the design would have to be the lavatories. The careful use of curves, mosaic patterns and dark tone mirrors gives a strong spatial impact when one enters the lavatory. Moreover, the sink counter centerpiece in the form of a lotus flower adds a unique twist. The female lavatory is also one of the very rare that has mother-and-child cubicles.



Twin Brook Hong Kong

Project Category
Residential

Client
The Incorporated Owners of Twin Brook

Scope of Work
Architectural Services, Building & Construction Services,
Engineering Services, Surveying

Completion Year
2011

Contact

LEE Chi Hang Joseph

Tel:
(852) 25608811

Email:
daal@daal.com.hk

This is a luxurious residential development located at 43 Repulse Bay Road. The development comprises a single residential tower of 21-storey high and 2 carparking levels. The design of the tower and main lobbies are influenced by the modern touch of luxury. A simple but elegant granite stone in combination of different textures is applied to the wall, floor, internal and external surfaces.

The tower external wall renovation works were carried out in phases: first the rear and sides, second the front. Under such arrangement, windows and air-conditioning units at the non-working sides could be operated as usual and the residents can enjoy the fresh air. Workmanship can be better controlled as the front elevation was refurbished in the last phase. Another major repair work in this project is to remove the corroded and leaking drain pipes concealed in the pipe ducts inside the bathroom of each units. Without diverting these communal drain pipes to the external wall, the hygiene and health of the residents will be impaired.



CityLink Plaza Hong Kong

Project Category

Office, Mixed-use & Commercial

Client

MTR Corporation Ltd.

Scope of Work

Architectural Services, Building & Construction Services,
Engineering Services, Surveying

Completion Year

2011

Contact

LEE Chi Hang Joseph

Tel:

(852) 25608811

Email:

daal@daal.com.hk

Citylink Plaza is a multi-storeyed commercial building sat in the Shatin Station facilities. The development the strategy of the proposed renovation works, besides to enrich the shopping experience was to attract and direct more customers from Shatin Station to Retail/F of Citylink Plaza, where a variety of retail shops and restaurants are located. Two new escalators with high quality were added to maintain a direct and convenient connection between Shatin Station and Retail/F of Citylink Plaza.

The challenge of this project is to carry out a high-quality renovation works above one of the busiest public transit premises, where all large scale construction works could only be carried out during night time which made site supervision and programme monitoring difficult. In order to minimize the impact to Station and tenants' operation, the renovation works were carried out in phases.



TVB City Dance Studio and Photography Studio

Hong Kong

Project Category

Office, Mixed-use & Commercial

Client

Television Broadcasts Ltd.

Scope of Work

Architectural Services, Building & Construction Services, Engineering Services, Others

Completion Year

2009

Gross Area (sq m)

1,163.62

Contact

LEE Chi Hang Joseph

Tel:

(852) 25608811

Email:

daal@daal.com.hk

The 1-storey Dance Studio and Photography Studio is located at the roof of the existing Workshop Block at TVB City. The objective of this project is to make use of the available Gross Floor Area and Site Coverage of the site and to create more space for dance and photography studio.

The studio is built with structural steel frames and enclosed with metal claddings in order to minimize the impact of the loading to the existing building. The high headroom studio and full-height glass walls enable both the dancers and photographers to fully utilize the space for all kinds of creative activities while enjoying the surrounding views. Its vivid orange colour allowed the studio to stand out from the adjacent industrial environment. With the great collaboration of the project team, the project was successfully completed in high quality standard and was able to fulfil user's expectation in both design and practical aspects.



Tsing Yi Church Meeting House Hong Kong

Project Category

Education & Culture

Client

The Church of Jesus Christ of Latter-Day Saints Hong Kong Ltd.

Scope of Work

Architectural Services, Building & Construction Services, Engineering Services, Surveying

Completion Year

2013

Gross Area (sq m)

666.127

Situated in a tiny site in Tsing Yi, the 3 storey high church including one assembly hall and a few Bishop's offices and classrooms cannot accommodate the increasing number of followers in the neighbourhood.

A new three storeys high building extension was therefore designed, and a comprehensive renovation is proposed to this existing church building. The project includes different types of works: demolition, site formation, piling, superstructure, renovation, landscaping and also fitting out works.

It is difficult to carry out construction works in such a highly congested site. The location of piles could neither sit on the existing caissons nor close to the existing huge trees, a specially designed structure thus proposed to tackle this site condition.

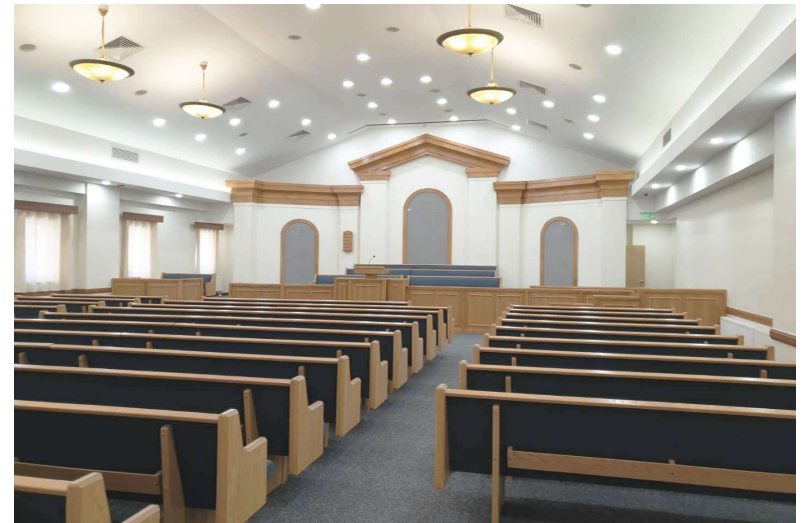
We make use of the space confined, putting the plant rooms underneath the pitched roof, below first floor and even inside the cupola in order to free up more space for the assembly hall and the classrooms. To fulfill the needs from client, we think outside the box to resolve difficulties.

Contact

LEE Chi Hang Joseph

Tel:
(852) 25608811

Email:
daal@daal.com.hk





Hong Kong Trade Development Council – Head Office

38/F Office Tower, Convention Plaza,
1 Harbour Road, Wan Chai, Hong Kong
Tel: (852) 1830 668 Fax: (852) 2824 0249 Contact us: www.hktdc.com/contact-us

香港貿易發展局總辦事處

香港灣仔港灣道1號會展廣場辦公大樓38樓
電話：(852) 1830 668 傳真：(852) 2824 0249 聯絡：www.hktdc.com/contact-us

www.hktdc.com

The Hong Kong Trade Development Council (HKTDC) makes no express or implied representation or warranty regarding the information, standing or credit of any person or company and in respect of any product or service. Please take normal commercial precautions for your business interest. While every effort has been made to ensure accuracy of any of the information provided, the HKTDC is not responsible for any errors or omissions concerning any such information, and does not accept any responsibility and liability for any loss or damage whatsoever arising from any cause whatsoever in connection with any use of the information. All copyright and other rights in the information belong to the HKTDC. It is prohibited to sell, distribute, publish, reproduce or otherwise use for any purpose (including but not limited to direct marketing or mass broadcasting) any information without prior written permission from the HKTDC.