

P&T Group



P&T Group

Address: 33/F, 633 King's Road, North Point
Contact Person: Chris Che
Tel: (852) 25756575
Email: pr@p-t-group.com
Website: www.p-t-group.com
Social Media: Facebook: www.facebook.com/pandtgroup/
WeChat: PT_Group
LinkedIn: www.linkedin.com/company/pt-architects-and-engineers-ltd

Company Profile

P&T Group is an award-winning, global design firm, providing clients with innovative, commercially successful and sustainable design solutions since its inception in 1868. Consistently ranked in the top largest consultancies in the world, our 1600-plus architects, engineers, urban designers and interior designers operate in over 70 cities, on an excess of 10 million square metres of combined floor area, annually. By sheer volume and a shared commitment to design excellence with each and every project, our work has, and will, continue to positively transform communities and improve lives.

Services

Architectural Services, Engineering Services, Others



K11 ATELIER King's Road Hong Kong

Project Category

Office, Mixed-use & Commercial

Client

New World Development Company Limited

Scope of Work

Architectural Services

Completion Year

2019

Gross Area (sq m)

45,350

Project Cost

USD 285,000,000

K11 ATELIER King's Road is an urban office redevelopment project in Hong Kong's Island East with a site area of 32,500 sq. ft. and a total gross floor area of 487,500 sq. ft., comprising 22 office floors, a multi-purpose exhibition hall, F&B outlets, a 3-storey basement car park and a wellness roof garden. The project fuses smart technologies with green design, art and craftsmanship to provide comfort and well-being for a next-generation workforce. It successfully took the 1st green loan and achieved the 1st highest rating of Platinum in LEED and WELL Building Standard in Hong Kong.

Awards

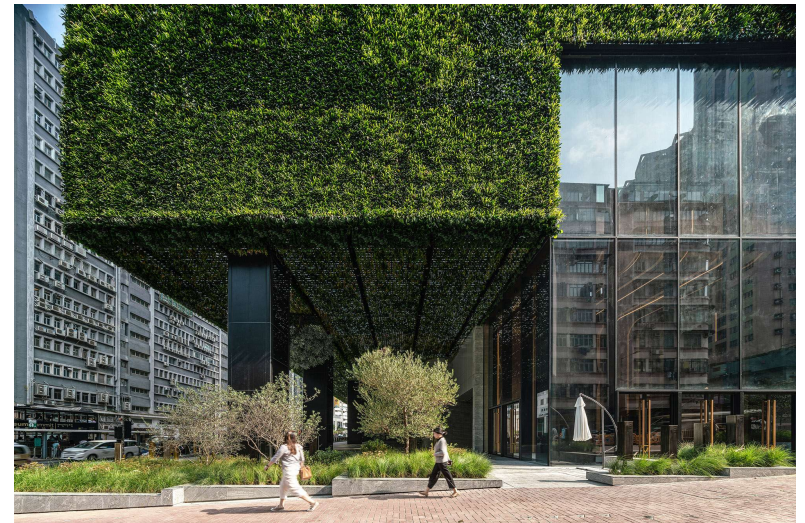
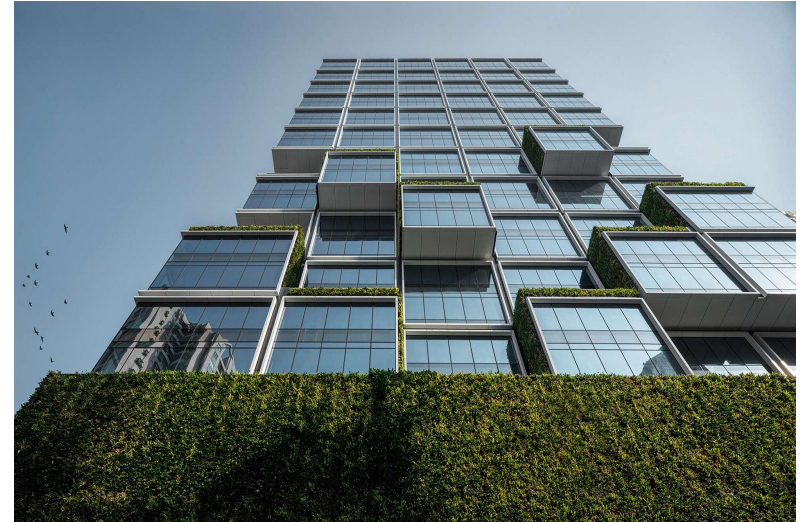
CTBUH 2021 Best Tall Building 100-199 meters Award of Excellence; Quality Building Award 2020 – Hong Kong Non-Residential (New Building – NGIC) Merit Award

Contact

Janette Chan

Tel:
(852) 25756575

Email:
ptaehk@p-t-group.com



Malvern College Hong Kong

Hong Kong

Project Category
Education & Culture

Client
Malvern College Hong Kong Limited

Scope of Work
Architectural Services

Completion Year
2018

Gross Area (sq m)
30,250

Project Cost
USD 81,600,000

Contact

Joel Chan

Tel:
(852) 25756575

Email:
ptaehk@p-t-group.com

Malvern College Hong Kong was awarded a greenfield site located in close proximity to the Hong Kong Science Park, the Chinese University of Hong Kong and the Education University of Hong Kong in Tai Po. The 30,000 square-metre campus houses both primary and secondary school and comprises academic, sports and performing art spaces that incorporates the latest innovations and technologies in teaching, learning and environmental sustainability. The campus also boasts of its low-carbon footprint which incorporates passive environmental design principles that enhance natural ventilation, light penetration, and shading. The landscaping elements on different levels has been carefully planned & designed to complement the adjacent green environment.

Awards

Quality Building Award 2020 – Hong Kong Non-Residential (New Building - GIC) Merit Award;
World Design Awards 2020 – Third Award; Asia Pacific Property Awards 2020 - Public Service Architecture



La Vetta

Hong Kong

Project Category
Residential

Client
Mega Island (HK) Limited

Scope of Work
Architectural Services

Completion Year
2018

Gross Area (sq m)
29,574

Project Cost
USD 238,000,000

Contact

Jennifer Lee

Tel:
(852) 28327499

Email:
ptaehk@p-t-group.com

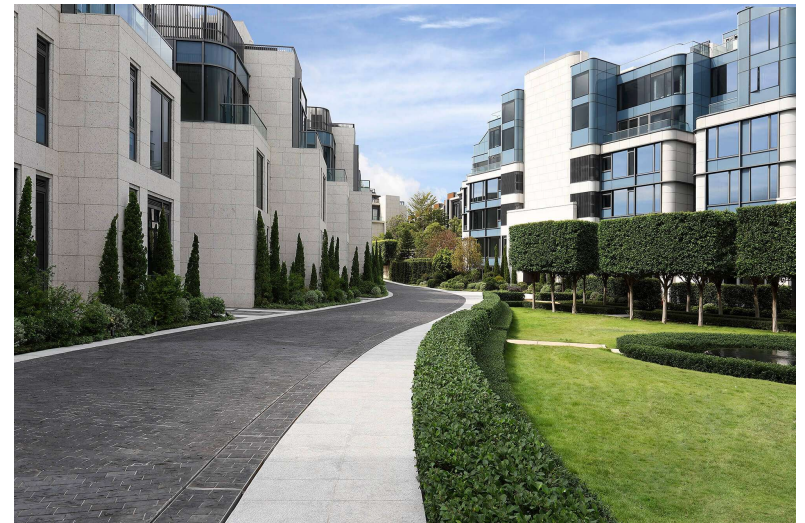
Located at the summit of Kau To Shan, La Vetta is a low-rise residential development with an unparalleled view across Tolo Harbour, Shatin skyline and Kau To Shan's undulating hills.

La Vetta provides 68 houses, 90 apartment units. The wide range of unit sizes caters for the fluctuation of family pattern, needs and preferences. Apartment units vary from smaller studios, typical simplex units to larger garden duplex and penthouse units. Houses come in different sizes ranging between 190sqm and 440sqm.

The development consists of a clubhouse with recreational facilities beside a sunken garden and basement floors for building services and car park with direct access to the houses and the apartment lift lobbies. All major building services provisions are located in the basement levels to free up the ground level for communal space, greenery and networks of garden circulation.

Awards

Asia Pacific Property Awards - Five-Star Best Architecture Multiple Residence



The ParQ Thailand

Project Category

Office, Mixed-use & Commercial

Client

Kasemsubsiri Co., Ltd.

Scope of Work

Architectural Services

Completion Year

2020

Gross Area (sq m)

Phase 1: 130,000

Contact

Sern Vithespongse

Tel:
(66) 26519180

Email:
ptthai@p-t-group.net

The PARQ's prime inner-city location is part of the Rama IV Corridor at the intersection of Ratchadaphisek and Rama IV roads, with direct access to the QSNCC MRT Station. This revitalized downtown area is fast becoming a leading business and commercial district with new office, retail, residential, and hospitality developments, as well as high-end healthcare facilities. It is also a convenient distribution hub strategically situated near the port.



Capital Square

Shanghai Shi, Shanghai, China

Project Category

Office, Mixed-use & Commercial

Client

CapitaLand

Scope of Work

Architectural Services

Completion Year

2018

Gross Area (sq m)

79,000

Contact

Henry Yip

Tel:
(852) 25756575

Email:
ptaehk@p-t-group.com

Capital Square is 127 metres tall, comprising 80,000 square metres of office, retail and public space. It has the potential to become one of the most significant in the emerging cluster of tall buildings in Shanghai. The mixed-use development is situated at the crossing of Metro Lines 1, 12, 13 and three public bus lines which would make a substantial contribution to the public realm. The planning of basement and ground floor retail areas provide a seamless connection to the Metro, whilst the new public amenity will serve Jing'an District. The underground Metro lines were constructed years before the developer acquired the land. The foundation structure, Metro mechanical vent openings, required public facilities and many other infrastructures were predetermined before the design of this comprehensive development. These constraints become a real challenge to the building design.



Raffles City Changning

Shanghai Shi, Shanghai, China

Project Category

Office, Mixed-use & Commercial

Client

CapitaLand

Scope of Work

Architectural Services

Completion Year

2017

Gross Area (sq m)

368,614

Contact

Henry Yip

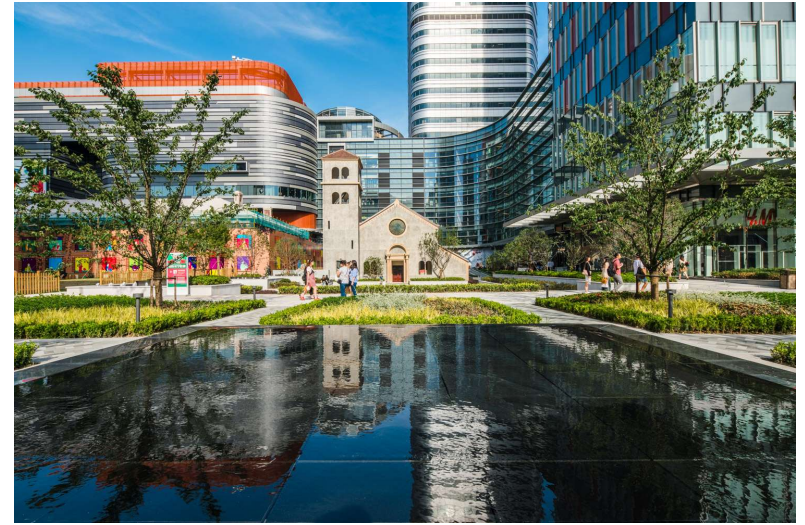
Tel:
(852) 25756575

Email:
ptaehk@p-t-group.com

Raffles City Changning is located in the core area of the Zhongshan Park business district and is connected to the No. 2, No. 3, and No. 4 rail lines. These include a 1,000-square-meter lawn, two shopping malls, three Grade A office space and five in Zhang Ailing alma mater - the construction or repair of buildings from the "St. Mary's school" site, with greening rate of more than 40%. The project will integrate commercial space with public space and lead a new trend of life in the business district.

Awards

The Hong Kong Institute of Urban Design (HKIUD) Urban Design Awards 2019 - Merit (Built Project)



Cullinan West Hong Kong

Project Category
Residential

Client
Sun Hung Kai Real Estate Agency Limited

Scope of Work
Architectural Services

Completion Year
2019

Gross Area (sq m)
245,360

Contact

Janette Chan

Tel:
(852) 25756575

Email:
ptaehk@p-t-group.com

This residential development consists of 7 blocks of high-rise towers, 7 blocks of low-rise towers, a 4-storey retail podium, and a 2-storey basement car park.



Gleneagles Hong Kong Hospital

Hong Kong

Project Category

Healthcare & Hospital

Client

NWS Holdings Limited

Scope of Work

Architectural Services

Completion Year

2017

Gross Area (sq m)

46750

Contact

Vivien Mak

Tel:

(852) 25756575

Email:

ptaehk@p-t-group.com

The new private hospital at Nam Fung Path, Wong Chuk Hang will serve the general public as well as academic bodies, the building design integrates "hoteldesign" concepts into a clinical environment to provide a comfortable, warm and welcoming atmosphere, and injects elements of arts to complement the healing and learning journey. The building will house 500 beds, general and specialist out-patient departments, operating centres, speciality centres, various clinical departments, ancillary services and parking facilities.

Awards

2017 Design & Health Academy Awards - International Health Project over 40,000 m2





Hong Kong Trade Development Council – Head Office

38/F Office Tower, Convention Plaza,
1 Harbour Road, Wan Chai, Hong Kong
Tel: (852) 1830 668 Fax: (852) 2824 0249 Contact us: www.hktdc.com/contact-us

香港貿易發展局總辦事處

香港灣仔港灣道1號會展廣場辦公大樓38樓
電話：(852) 1830 668 傳真：(852) 2824 0249 聯絡： www.hktdc.com/contact-us

www.hktdc.com

The Hong Kong Trade Development Council (HKTDC) makes no express or implied representation or warranty regarding the information, standing or credit of any person or company and in respect of any product or service. Please take normal commercial precautions for your business interest. While every effort has been made to ensure accuracy of any of the information provided, the HKTDC is not responsible for any errors or omissions concerning any such information, and does not accept any responsibility and liability for any loss or damage whatsoever arising from any cause whatsoever in connection with any use of the information. All copyright and other rights in the information belong to the HKTDC. It is prohibited to sell, distribute, publish, reproduce or otherwise use for any purpose (including but not limited to direct marketing or mass broadcasting) any information without prior written permission from the HKTDC.